

Super DNA Marker

Catalog Number:

CW2583S (100 preps)
CW2583M (500 preps)

Storage Condition:

-20°C

Kit Components:

| Component | CW2583S (100 preps) | CW2583M (500 preps) |
|------------------|------------------------|------------------------|
| Super DNA Marker | 500 µl | 5× 500 µl |

Product Introduction:

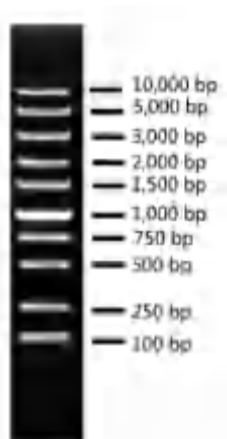
The Super DNA Marker consists of 10 DNA fragments of 10,000, 5,000, 3,000, 2,000, 1,500, 1,000, 750, 500, 250, and 100 bp respectively. This product already contains 1× Loading Buffer and 5 µl can be directly loaded for electrophoresis gel. It is very convenient to use. The DNA fragment of 1,000 bp is the brightest band and it is about 150 ng. The amount of DNA for other bands is approximately 50 ng each.

Precautions:

1. This product can be directly used after thawing and mixing; No need of heating.
2. Please change the electrophoresis running buffer and use an agarose gel newly made to avoid affecting the electrophoresis results.
3. For DNA agarose gel electrophoresis, the purity of the gel has a great influence on the clarity of the DNA bands. Try to use good quality agarose. The recommended gel concentration is 1%-3%, and the voltage is 4-8 v/cm.
4. Gel concentration is closely related to the separation of DNA fragments. The higher the gel concentration, the better the separation of short DNA fragments; conversely, the lower the gel concentration, the better the separation of long DNA fragments.

Protocol:

Load 5 µl of Super DNA Marker into the agarose gel wells (if the width of wells is larger than 6 mm, increase the loading sample volume), then run electrophoresis gel.



5 µl of Super DNA Marker loaded on a 1% agarose gel